

State of Wyoming Corner Record

CORNER PERPETUATION AND FILING ACT.
Regulations of the Board of Registration for Professional Engineers and Land Surveyors.)

Reverse side of this form may be used if more space is needed.

Record of original survey and citation of source of historic information (if corner is lost or obliterated). Description of corner monumentation evidence found and/or monument and accessories established to perpetuate the location of this corner. Sketch of relative location of monument, accessories, and reference points with course and distance to adjacent corner(s) (if determined in this survey). Method and rationale for reestablishment of lost or obliterated corner.

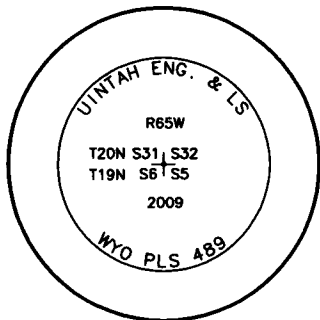
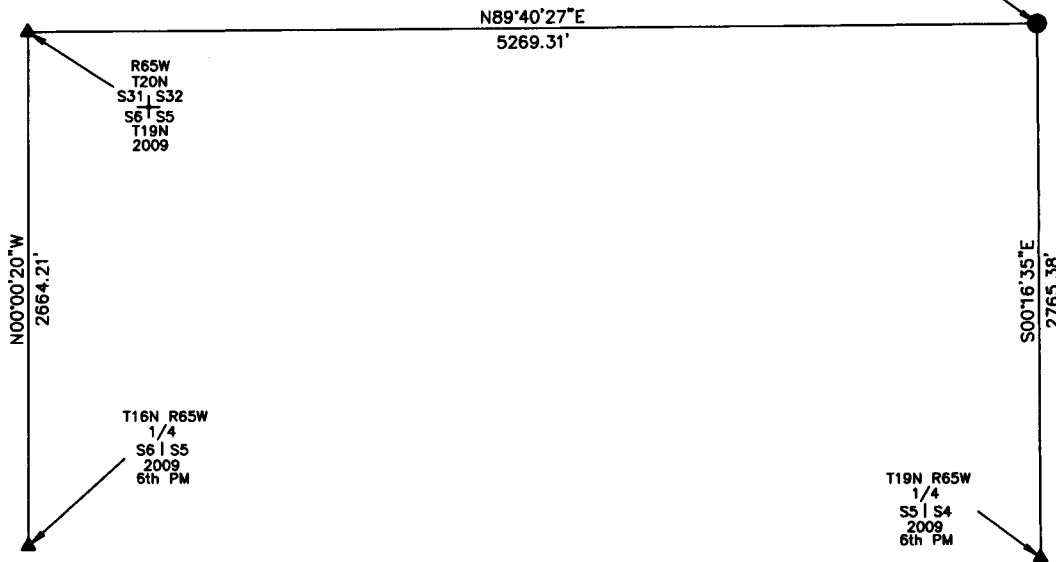
FOUND SINGLE WEATHERED SANDSTONE (NO OTHER STONES IN AREA) CORNER FALLS 2.5' EAST OF N/S FENCE.
SET 3/4" REBAR AND 2 1/2" ALUM. CAP IN IT'S PLACE-BURIED STONE 1' SOUTH AND 1' DEEP SET STEEL POST 1' NORTH. THIS IS THE MONUMENT FOR THE CORNER AND THE CAP IS MARKED AS SHOWN.



SCALE 1"=1000'
(EXCEPT IN TRIVIAL CASES)
BEARINGS ARE RELATED TO WGS 84 WITH GPS OBSERVATIONS
DRAWN BY: M.D.
P.C. J. FLOYD
COUNTY: LARAMIE

UINTAH ENG. & LS
R65W
T20N S32, S33
T19N S5, S4
2009
WYO PLS 489

THE MONUMENT IS FOR:



THE MONUMENT IS MARKED



RECORDED 3/21/2011 AT 1:46 PM REC# 565127 BK# 2212 PG# 939
DEBRA K. LATHROP, CLERK OF LARAMIE COUNTY, WY PAGE 1 OF 1

Date of Field Work: 11/06/2009 Office Reference:

CROSS INDEX DIAGRAM

	1	2	3	4	5	6	7	8	9	10	11	12	13	14	15	16	17	18	19	20	21	22	23	24	25
A																									
B																									
C																									
D																									
E																									
F																									
G																									
H																									
J																									
K																									
L																									
M																									
N																									
O																									
P																									
Q																									
R																									
S																									
T																									
U																									
V																									
W																									
X																									
Y																									
Z	1	2	3	4	5	6	7	8	9	10	11	12	13	14	15	16	17	18	19	20	21	22	23	24	25

Firm/Agency, Address

UELS, LLC

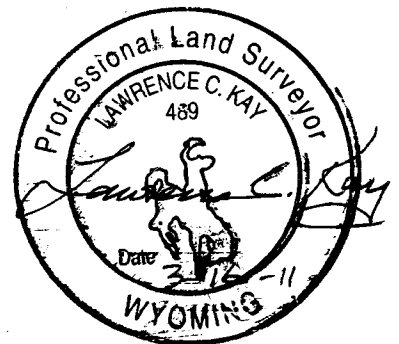
85 South 200 East

Vernal, Utah 84078

Telephone Number: 435-789-1017

This corner record was prepared by me or under my direction and supervision.

SEAL & SIGNATURE



CORNER COMMON TO 4 SECTIONS
Corner Name: NORTHEAST CORNER OF SECTION 5 Section: 5 T. 19N R. 65W ; 6TH P.M. Cross Index No.: A-9